

MATERIAL SAFETY DATA SHEET

SIGNOLL 40% WG

1. Chemical Product Identification

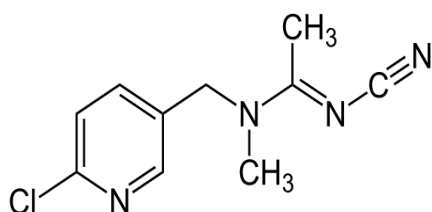
1.1 Product Details

Product Name: Signoll 40% WG

Molecular Formula: C₁₀H₁₁ClN₄

Molecular Weight: 222.68

Structural Formula:



Chemical Name: N-[(6-chloro-3-pyridyl)methyl]-N₂-cyanogen-N'-methylacetamidine

2. Composition / Information on Ingredients

Ingredients:	% content W/W
ACETAMIPRID a.i.	40.00
Other ingredients	60.00

3. Hazards Identification

Emergency Overview:

Caution. Hazard to humans and domestic animals.

Keep out of reach of children.

4. First Aid Measures

Eye: Hold eye open and rinse slowly and gently with water for 15-20 minutes. Remove contact lenses, if present, after the first 5 minutes, then continue rinsing eye. Call a poison control center or doctor for treatment advice.

Skin: Take off contaminated clothing. Rinse skin immediately with plenty of water for 15-20 minutes. Call a poison control center or doctor for treatment and advice.

Ingestion: Immediately call a poison control center or doctor for treatment and advice. DO NOT induce vomiting unless directed to do so by a physician or poison control center. Have a person sip a glass of water if able to swallow. Do not give anything by mouth to an unconscious person.

Inhalation: Move person to fresh air. If person is not breathing, call an ambulance, then give artificial respiration, preferably mouth to-mouth if possible. Call a poison control center or doctor for further treatment advice.

Note to Physician: There is no specific antidote. All treatment should be based on observed signs and symptoms of distress in the patient. Overexposure to materials other than this product may have occurred.

5. Fire-Fighting Measures

Flash Point: >165°C.

Explosiveness: Not explosive

Fire and Explosion Hazards: Like all organic and most dry chemicals, this product (when mixed with air in critical proportions and in the presence of an ignition source) may present an explosion hazard.

Suitable Extinguishing Media: dry chemical, alcohol foam, water spray, carbon dioxide (CO₂).

Fire Fighting Instructions: Firefighters should wear NIOSH/MSHA approved self-contained breathing apparatus and full protective clothing. Keep unnecessary people away, isolate hazard area and deny entry. Stay upwind if possible. Keep out of low areas. Persons who may have been exposed to contaminated smoke should be immediately examined by a physician and checked for symptoms of poisoning. The symptoms should not be mistaken for heat exhaustion or smoke inhalation.

6. Accidental Release Measures

General and Disposal

Evacuation Procedures and Safety: Personnel handling this material should be thoroughly trained to handle spills and releases. Wear appropriate gear for the situation. See Personal Protection information in Section 8.

Cleanup and Disposal of Spill: Sweep up and place in an appropriate closed container (see Section 7: Handling and Storage). No sparking tools should be used. Avoid creation of dusty conditions. Clean up residual material by washing area with water and detergent. Collect washings for disposal. Decontaminate tools and equipment following cleanup.

Land Spill or Leaks: Containment of Spill: Stop leak if it can be done without risk. Follow procedure under Cleanup and Disposal of Spill.

7. Handling and Storage

Handling Procedures: KEEP OUT OF REACH OF CHILDREN AND ANIMALS.

Personnel handling this product should be thoroughly trained as to its hazards. Use non sparking tools and grounded/ bonded equipment and containers when transferring. Do not ingest. Do not breathe dust or mists. Avoid getting material on clothing. Use handling, storage and disposal procedures that will prevent contamination of water, food or feed.

Storing Procedures: Do not store in or around the home. Store unused product in a cool, ventilated, dry, locked area. Never transfer this product to another container for storage. Do not allow prolonged storage in areas where temperature frequently exceed 115 deg F (46 deg C).

8. Exposure Controls/Personal Protection

Engineering Controls: Where engineering controls are indicated by use conditions or a potential for excessive exposure exists, the following traditional exposure control techniques may be used to effectively minimize employee exposures: general area dilution/exhaust ventilation.

Eye/Face Protection: Eye and face protection requirements will vary dependent upon work environment conditions and material handling practices.

Appropriate ANSI Z87 approved equipment should be selected for the particular use intended for this material. Eye contact should be prevented through use of chemical safety glasses with side shields or splash proof goggles. An emergency eye wash must be readily accessible to the work area.

Body Protection: Applicators and other handlers must wear long-sleeved shirts, long pants, chemical resistant, waterproof gloves, and shoes plus socks during mixing, loading, applying and clean-up and repair activities. Where overhead exposure is possible, chemical resistant headgear should be worn.

9. Physical and Chemical Properties

Form / State: Granular

Color: Light grey

Odor: No odor determined.

pH: 8.5 - 9.5 at 1 wt/wt% dilution in water at 22 deg C

Vapor Density (air = 1): Not Available

Density: 13-17 lb/cu ft (loose)

Boiling Point: Not Available

Melting/Freezing Point: 98 deg C Approximately

Solubility (in water): Approximately 2.7 wt / wt %

10. Stability and Reactivity

Chemical Stability: This material is stable under normal handling and storage conditions described in Section 7.

Conditions to Avoid: Not known / specified.

11. Toxicological Information

Acute Oral Toxicity: Rat: LD50: 3160 mg/kg

Acute Dermal Toxicity: Rabbit: LD50: > 2,150 mg/kg

Acute Inhalation Toxicity: Rat: LC50: > 2.88 mg/l 4 h

Acute Respiratory Irritation: No test data found for product.

Skin Irritation: Rabbit: Not irritating

Eye Irritation: Rabbit: Not irritating

12. Ecological and Ecotoxicological Information

Environmental Precautions: This product is toxic to wildlife. This product is toxic to bees exposed to direct treatment. Do not apply this product while bees are actively visiting the treated area. Do not apply directly to water, to areas where surface water

is present or to intertidal areas below the mean high water mark. Do not contaminate water when disposing of equipment wash water or rinsate. Do not contaminate water used for irrigation or domestic purposes.

13. Disposal Considerations

General Disposal Guidance: Do not contaminate water, food, or feed by storage or disposal. Contamination with this product will render water, food or feed unfit for human or animal consumption.

Container Disposal: Triple rinse the empty container. Add the rinsing to the spray mixture in the tank. Make the empty rinsed container unsuitable for further use. Dispose of the container in accordance with provincial requirements. For information on disposal of unused, unwanted product, contact the manufacturer or the provincial regulatory agency.

14. Transport Information:

Not applicable

15. Regulatory Information:


Not applicable

16. Other Information:

All information and instructions provided in this Material Safety Data Sheet (MSDS) are based on the current state of scientific and technical knowledge at the date indicated on the present MSDS and are presented in good faith and believed.

Name: Wang Zhengpeng

Technical manager

Sign: 

Date: 2020.08.15